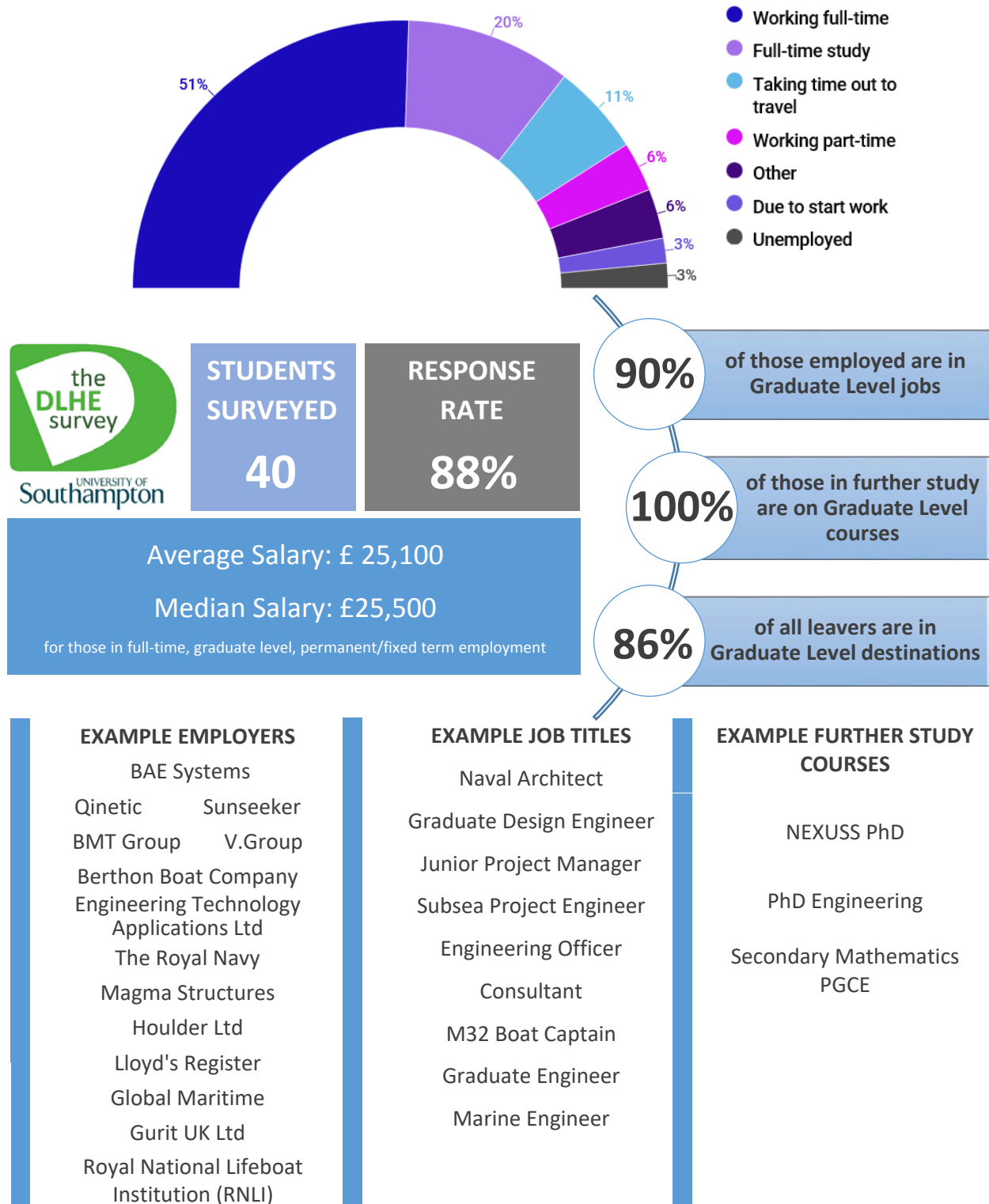
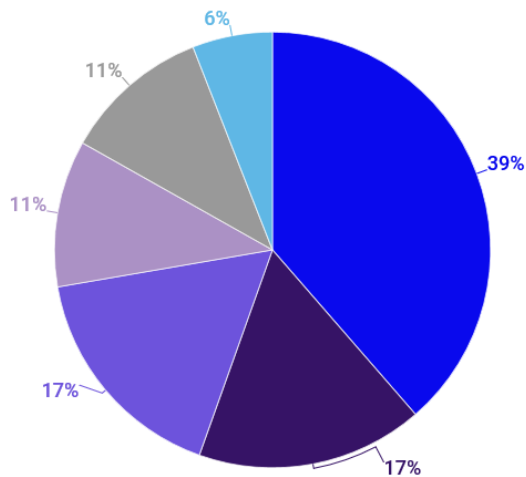


Destinations of 2016/17 Graduating Cohort – Maritime Engineering (Ship Science)*

The data below was collected as part of the annual Destinations of Leavers from Higher Education (DLHE) survey. It relates to full-time, undergraduate students from the United Kingdom.



HOW JOB WAS FOUND



- Employer website
- Personal contacts
- Already worked there
- Recruitment agent/site
- University (Lecture, Web)
- University (Careers)

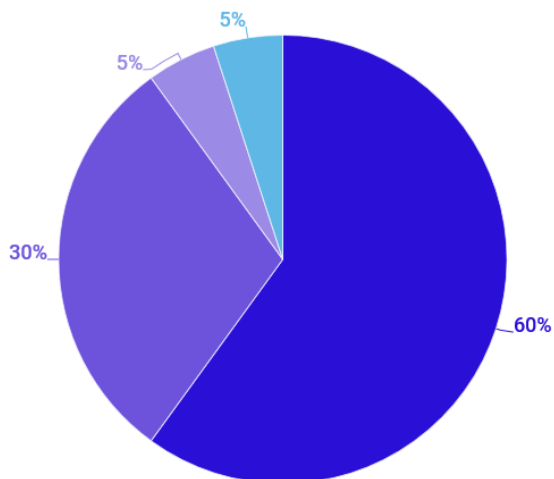
81%

OF LEAVERS STATED THAT
THEIR COURSE PREPARED
THEM EITHER WELL OR VERY
WELL FOR EMPLOYMENT

72%

OF LEAVERS STATED THAT THEIR
QUALIFICATION WAS A FORMAL
REQUIREMENT OR AN ADVANTAGE
FOR EMPLOYMENT

EMPLOYMENT BASIS



- Permanent or open-ended contract
- Fixed-term contract (12 months or longer)
- Fixed-term contract (less than 12 months)
- Zero hours contract

EMPLOYMENT LOCATIONS FOR FACULTY OF ENGINEERING AND THE ENVIRONMENT

